



Stevenson Marshall
Property & Law

63 Dean Ridge, Gowkhall, Dunfermline, KY12 9PE

Offers Over £320,000

A bright and spacious detached villa boasting superb outlooks over neighbouring farmland.

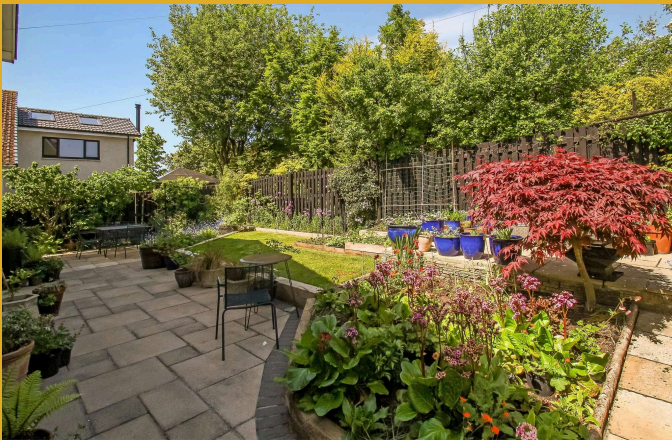
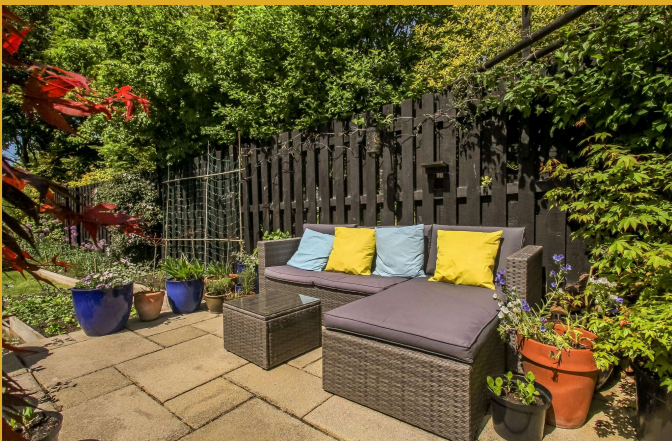
Accommodation comprises:- entrance hallway, lounge, dining area, kitchen, WC/cloaks, upper landing, four bedrooms, and four piece bathroom.



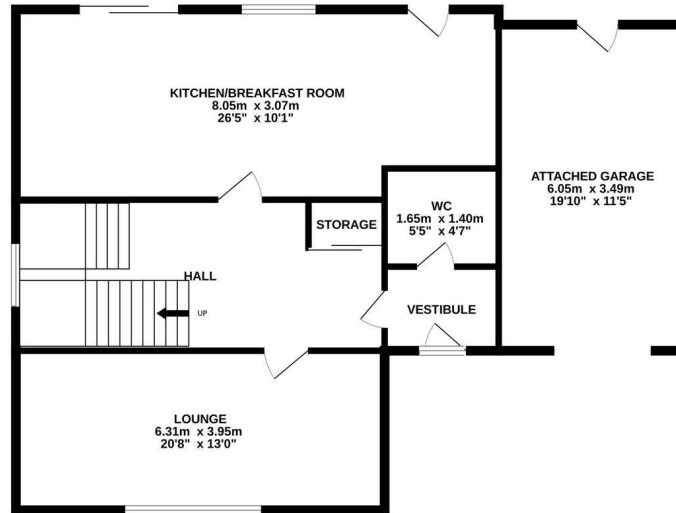


Gas central heating and double glazed windows are installed and the property benefits from a brand new roof, excellent storage, pleasant outlooks, flexible layout and home safe. The most impressive mature garden grounds boast a variety of flower beds, shrubs, trees, charming pathway and generous patios. A garage and driveway to front provide ample off street parking for several vehicles.

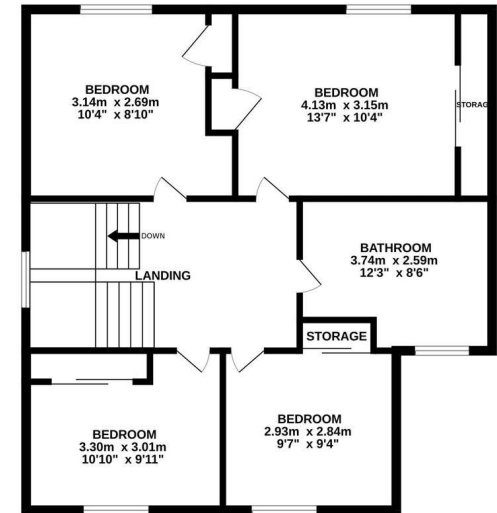




GROUND FLOOR



1ST FLOOR



Whilst every attempt has been made to ensure the accuracy of the floorplan contained here, measurements of doors, windows, rooms and any other items are approximate and no responsibility is taken for any error, omission or mis-statement. This plan is for illustrative purposes only and should be used as such by any prospective purchaser. The services, systems and appliances shown have not been tested and no guarantee as to their operability or efficiency can be given.
Made with Metropix ©2026

63 Dean Ridge enjoys a peaceful cul de sac setting, within Gowkhill, a small hamlet, surrounded by open countryside approximately four miles west of Dunfermline City Centre. The nearby village of Carnock has a primary school and public house/restaurant. There are also regular bus services connecting the area to Dunfermline and Oakley, where there is a wider range of facilities and amenities. Forrester Park 18 hole golf course (including two restaurants) is located within one mile from the property.



www.stevenson-marshall.co.uk

An appointment to view can be made by contacting selling agents on 01383 721141.

[Contact us](#)

41 East Port, Dunfermline, KY12 7LG | Tel: 01383721141
DX DF80 Dunfermline | Email: property@stevenson-marshall.co.uk

Follow us  @Stevenson.Marshall



Whilst every care is taken in the preparation of these particulars, please check all dimensions and floor plan shapes, as these particulars do not form part of any contract and the statements or plans contained herein are not warranted nor to scale. Approximate measurements have been taken by electronic device at the widest point. Services and appliances have not been tested for efficiency or safety and no warranty is given as to their compliance with any Regulations.