

**Stevenson Marshall**  
Property & Law

10 Law Road, Dunfermline, KY11 4XB

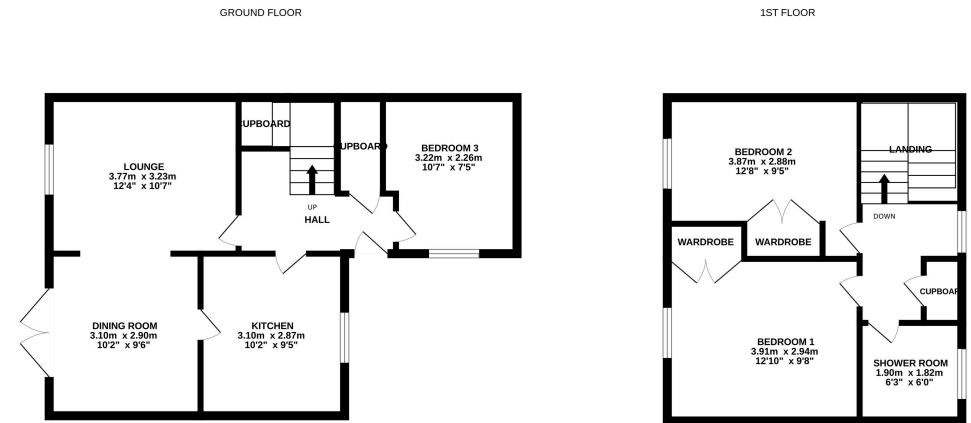
Offers Over £135,000

A well proportioned end terraced villa with neat south facing garden to rear and ample parking. Accommodation comprises: entrance hallway, lounge, dining room, dining kitchen, downstairs bedroom, upper landing, two further bedrooms and modern shower room.

Gas central heating and double glazed windows are installed and the property benefits from excellent storage, attractive French Doors in dining room and a flexible internal layout. EPC rating: C. Council tax band: C.

The neat garden grounds offer numerous shrubs, patio area, lawn section, greenhouse, drying facilities and a south facing aspect. The property has ample parking areas to front and side.

Law Road forms parts of a long established residential area within walking distance of excellent local amenities. For the commuter, easy access can be gained to the M90 Motorway with direct links to Edinburgh, Perth, Dundee and central Scotland via the Kincardine and Forth Bridges. A regular bus service operates. Dunfermline Queen Margaret Rail Halt (with services to Edinburgh) is within walking distance.



Whilst every attempt has been made to ensure the accuracy of the floorplan contained here, measurements of doors, windows, rooms and any other items are approximate and no responsibility is taken for any error, omission or mis-statement. This plan is for illustrative purposes only and should be used as such by any prospective purchaser. The services, systems and appliances shown have not been tested and no guarantee as to their operability or efficiency can be given.  
Made with Metropix c2026



An appointment to view can be made by contacting selling agents on 01383 721141.

Contact us

41 East Port, Dunfermline, KY12 7LG | Tel: 01383721141  
DX DF80 Dunfermline | Email: [property@stevenson-marshall.co.uk](mailto:property@stevenson-marshall.co.uk)

Follow us  @Stevenson.Marshall

[www.stevenson-marshall.co.uk](http://www.stevenson-marshall.co.uk)



Whilst every care is taken in the preparation of these particulars, please check all dimensions and floor plan shapes, as these particulars do not form part of any contract and the statements or plans contained herein are not warranted nor to scale. Approximate measurements have been taken by electronic device at the widest point. Services and appliances have not been tested for efficiency or safety and no warranty is given as to their compliance with any Regulations.