

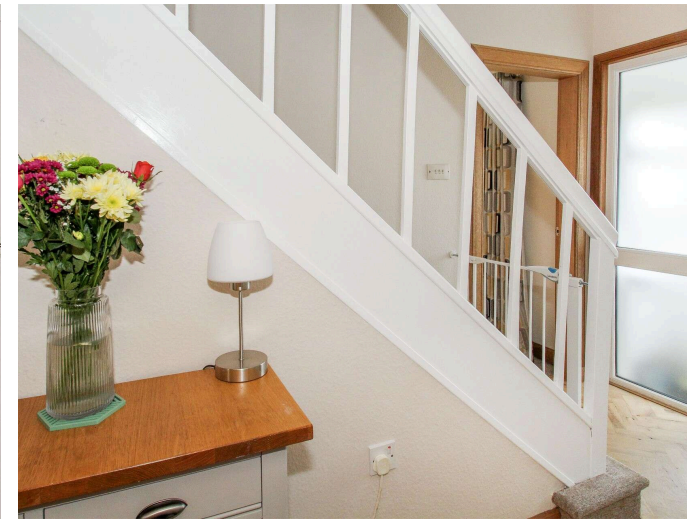
**Stevenson Marshall**  
Property & Law

21 Gowanbrae Drive, Dunfermline, KY12 7UL

Offers Over £275,000

# A bright and spacious detached villa in desirable location, close to rail station and city centre.

Accommodation comprises: entrance hallway, full length lounge/dining, modern kitchen (with solid oak work tops and appliances), downstairs bedroom, bathroom, upper landing and two further double bedrooms.



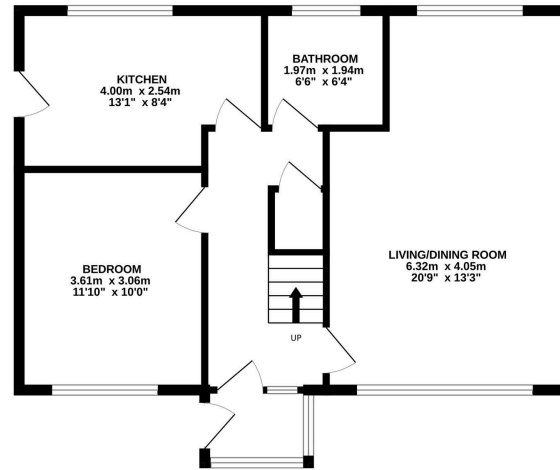


Gas central heating and double glazed windows are installed and the property boasts excellent storage, oak parquet flooring and quality fixtures and finishing throughout. The generous gardens are mainly laid to lawn, with drying facilities provided, a large shed/workshop, patio area and a south facing aspect to rear. There is ample on street parking.

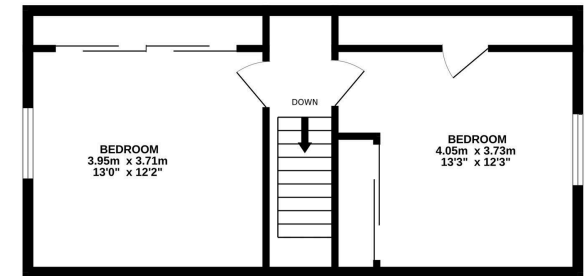




GROUND FLOOR



1ST FLOOR



Whilst every attempt has been made to ensure the accuracy of the floorplan contained here, measurements of doors, windows, rooms and any other items are approximate and no responsibility is taken for any error, omission or mis-statement. This plan is for illustrative purposes only and should be used as such by any prospective purchaser. The services, systems and appliances shown have not been tested and no guarantee as to their operability or efficiency can be given.  
Made with Metropix ©2026

Located off Thimbehall Drive, Gowanbrae Drive enjoys a quiet setting within the highly sought after Garvock Hill district of Dunfermline. The property is walking distance of railway station, primary and secondary schools and excellent local amenities. Dunfermline City Centre is approximately one mile away. There is easy access to the M90 Motorway for travel both north and south and a regular bus service operates close by.



[www.stevenson-marshall.co.uk](http://www.stevenson-marshall.co.uk)

An appointment to view can be made by contacting selling agents on 01383 721141.

[Contact us](#)

41 East Port, Dunfermline, KY12 7LG | Tel: 01383721141  
DX DF80 Dunfermline | Email: [property@stevenson-marshall.co.uk](mailto:property@stevenson-marshall.co.uk)

Follow us  @Stevenson.Marshall



Whilst every care is taken in the preparation of these particulars, please check all dimensions and floor plan shapes, as these particulars do not form part of any contract and the statements or plans contained herein are not warranted nor to scale. Approximate measurements have been taken by electronic device at the widest point. Services and appliances have not been tested for efficiency or safety and no warranty is given as to their compliance with any Regulations.