



Stevenson Marshall
Property & Law

40 Kinnaird Place, Dunfermline, KY12 0XL

Offers Over £135,000

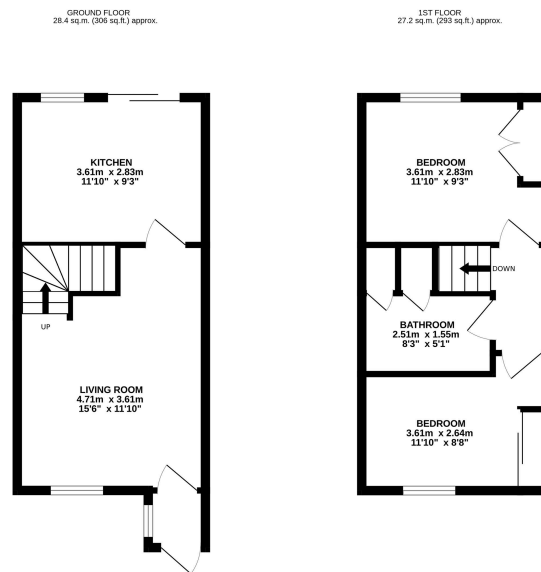
A modern mid terraced villa with pleasant open outlooks, located within walking distance of Queen Margaret Rail Halt. Gas central heating and double glazed windows are installed with good storage and fresh décor throughout.

The property boasts an excellent internal layout which includes an entrance vestibule, lounge (with picture window and open plan staircase to upper landing), dining kitchen to rear, upper landing, two double bedrooms and bathroom.

There are garden grounds to front and rear which are mainly paved with drying facilities provided, a lawn section and many shrubs. The property benefits from ample communal parking areas to front. Please note: the rear garden will be tidied and fence fully repaired prior to sale.

Kinnaird Park forms part of a highly sought after residential area close to Queen Margaret Rail Halt. There is easy access to the M90 Motorway for travel both north and south and a regular bus service operates. Local shops, well-reputed primary and secondary schools and Dunfermline Public Park are within walking distance. Dunfermline City Centre is approximately one mile away.

This property is being sold in its present condition and no warranty will be given to any purchaser with regard to the existence or condition of the services or any heating or other system within the property.



www.stevenson-marshall.co.uk

An appointment to view can be made by contacting selling agents on 01383 721141.

Contact us

41 East Port, Dunfermline, KY12 7LG | Tel: 01383721141
DX DF80 Dunfermline | Email: property@stevenson-marshall.co.uk

Follow us  @Stevenson.Marshall

espc
rightmove

NATIONAL ASSOCIATION
NAEA
ESTATE AGENTS

Whilst every care is taken in the preparation of these particulars, please check all dimensions and floor plan shapes, as these particulars do not form part of any contract and the statements or plans contained herein are not warranted nor to scale. Approximate measurements have been taken by electronic device at the widest point. Services and appliances have not been tested for efficiency or safety and no warranty is given as to their compliance with any Regulations.