

Stevenson Marshall
Property & Law

4 Cypress Grove, Dunfermline, KY11 8AF

Offers Over £200,000

An extended modern detached villa in sought after location, close to excellent local amenities.

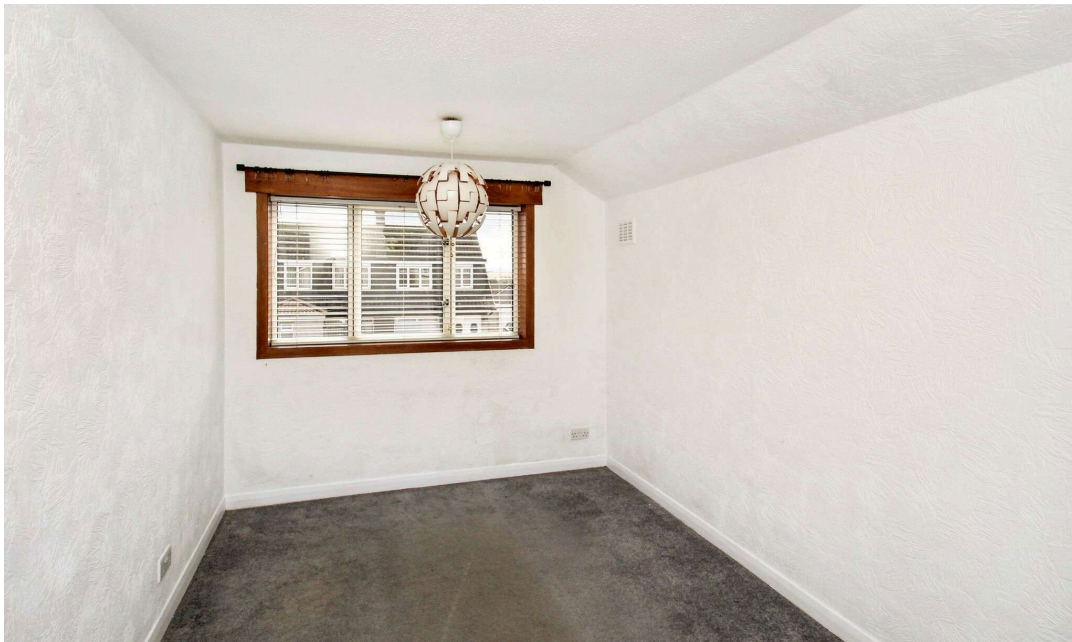
Accommodation comprises:- entrance hallway, lounge (with feature log burning stove), dining room, family room, kitchen (with pantry), upper landing, three bedrooms and modern bathroom. Gas central heating and double glazed windows are installed and there is a flexible layout and good storage throughout.

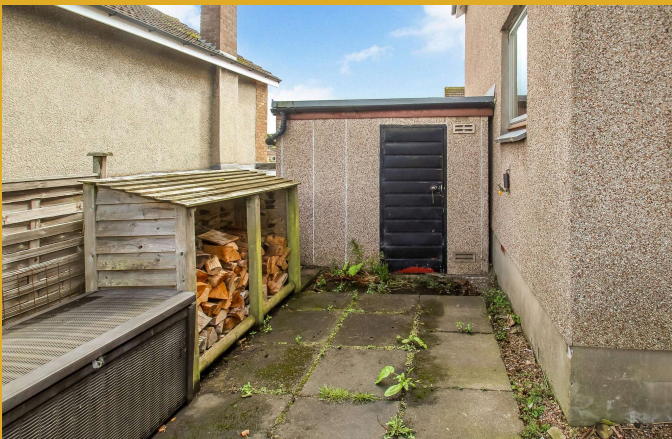




Gas central heating and double glazed windows are installed and there is a flexible layout and good storage throughout.

The property boasts generous garden grounds to front and rear which feature a lawn section, patio, drying facilities, maximum privacy and a west facing aspect to rear. A spacious driveway and garage to front provide ample off street for several vehicles. Worth highlighting is the potential to extend the property to rear (subject to planning permission/approved previously).





Cypress Grove is located off Pitcorthie Drive, forming part of the desirable Pitcorthie district of Dunfermline, located only two miles south of Dunfermline City Centre and railway station. Available within half a mile are well reputed primary and secondary schools. Regular bus services operate close by and there are good local amenities and easy access to the Forth Road Bridges and M90 Motorway for travel both north and south. Rosyth Railway Station is close by.



An appointment to view can be made by contacting selling agents on 01383 721141.

Contact us

41 East Port, Dunfermline, KY12 7LG | Tel: 01383721141
DX DF80 Dunfermline | Email: property@stevenson-marshall.co.uk

Follow us  @Stevenson.Marshall



www.stevenson-marshall.co.uk

Whilst every care is taken in the preparation of these particulars, please check all dimensions and floor plan shapes, as these particulars do not form part of any contract and the statements or plans contained herein are not warranted nor to scale. Approximate measurements have been taken by electronic device at the widest point. Services and appliances have not been tested for efficiency or safety and no warranty is given as to their compliance with any Regulations.