

**Stevenson Marshall**  
Property & Law

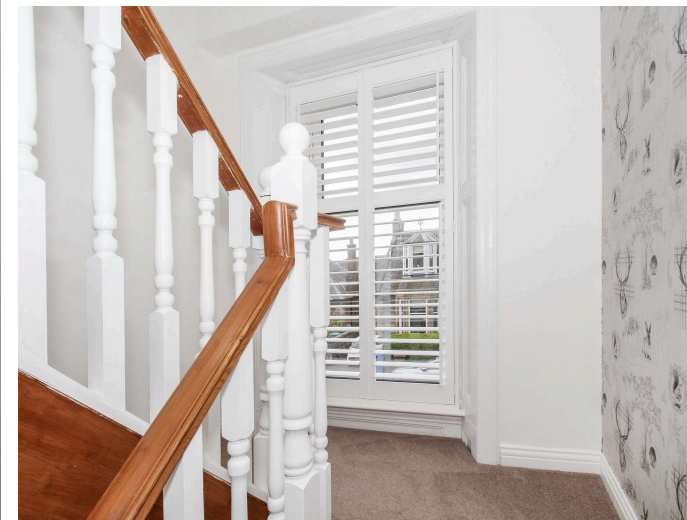
**53 Cameron Street, Dunfermline, KY12 8DP**

**Offers Over £325,000**



A truly stunning main door double upper flat (circa 1900) with most impressive accommodation over two floors and private walled gardens to rear (with garden office and summer house).

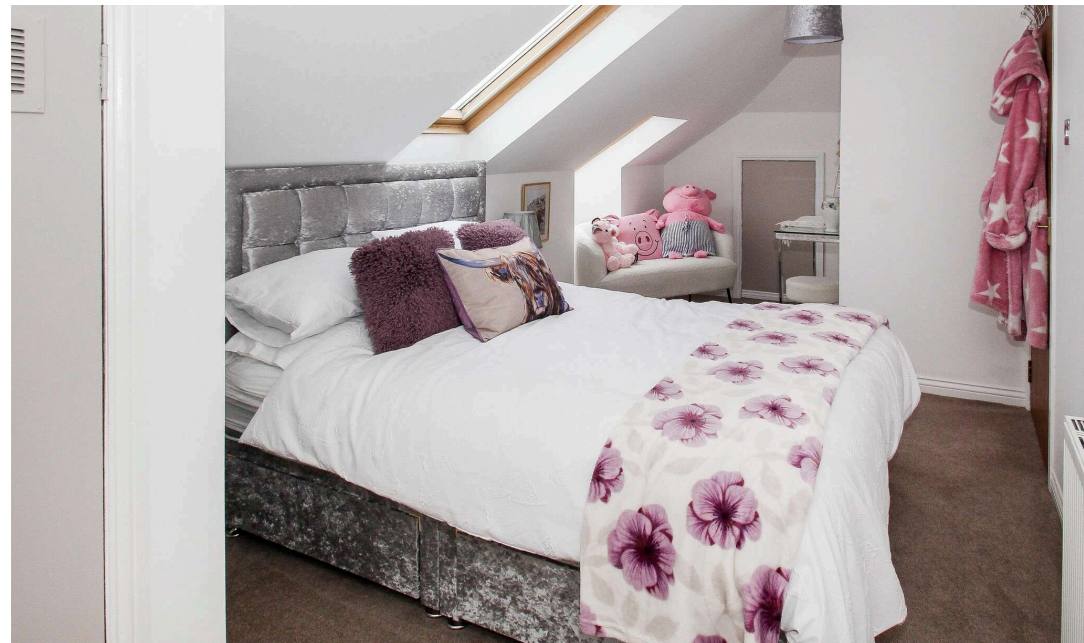
Accommodation comprises: internal staircase and reception hallway (with original stained glass windows), bay windowed lounge (with new marble fireplace and hearth, with modern electric thermostatically controlled fire), brand new luxury dining kitchen, large utility room, two double bedrooms, bathroom, upper landing (with feature full length sash and case window), two further double bedrooms and shower room.



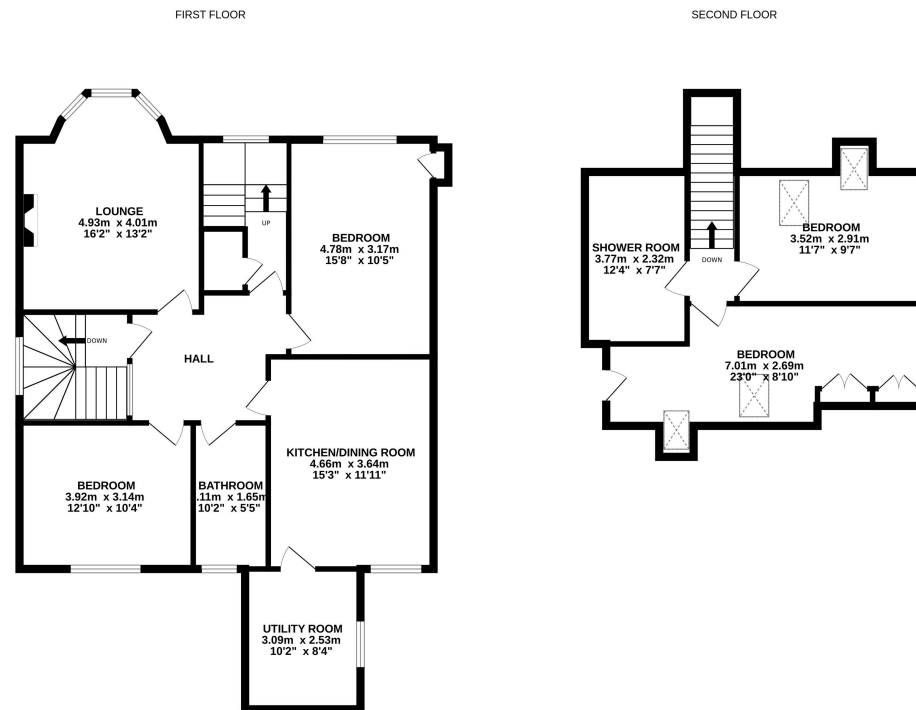
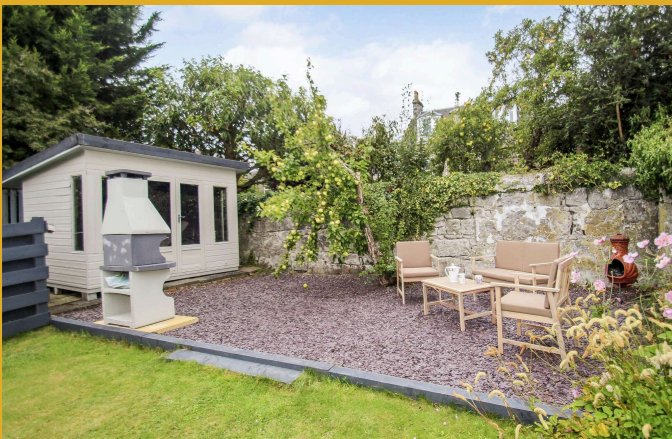




The dining kitchen boasts an integrated dishwasher, electric induction hob , double oven, NEFF extraction hood and breakfast bar. Gas central heating (Worcester Bosch boiler is less than 1 year old) and double glazed windows are installed throughout, with some new sash and case windows. EPC rating: C. Floor area: 142 square metres approx. The property boasts many fine features which include deep skirting, decorative ceiling coving, beautifully restored original doors and impressive stained glass windows in the hallway and staircase. There is a flexible layout, excellent storage, stylish window shutter blinds, tasteful decor throughout, brand new deep pile wool carpets, high specification fixtures and fittings and pleasant outlooks to front and rear.







The property enjoys private walled gardens to rear which feature a host of mature shrubs, two generous patios, flower beds, well manicured lawn, freshly painted summer house and garden office (with power and light). Drying facilities are provided.

Only a few minutes walk from Pittencrieff Park, Cameron Street is a desirable residential area located within half a mile of Dunfermline City Centre, bus station and approximately one mile from Dunfermline Railway Station. There are also good local amenities close by, including a well reputed primary school, grocery store, high street shopping and Tesco Superstore. The M90 Motorway for travel both north and south is only a short drive away. A regular bus service operates.



**Stevenson Marshall**  
Property & Law

[www.stevenson-marshall.co.uk](http://www.stevenson-marshall.co.uk)

An appointment to view can be made by contacting selling agents on 01383 721141.

Contact us

41 East Port, Dunfermline, KY12 7LG | Tel: 01383721141

DX DF80 Dunfermline | Email: [property@stevenson-marshall.co.uk](mailto:property@stevenson-marshall.co.uk)

Follow us



@Stevenson.Marshall

**ēspc**

**rightmove**

NATIONAL ASSOCIATION  
**NAEA**  
ESTATE AGENTS

Whilst every care is taken in the preparation of these particulars, please check all dimensions and floor plan shapes, as these particulars do not form part of any contract and the statements or plans contained herein are not warranted nor to scale. Approximate measurements have been taken by electronic device at the widest point. Services and appliances have not been tested for efficiency or safety and no warranty is given as to their compliance with any Regulations.