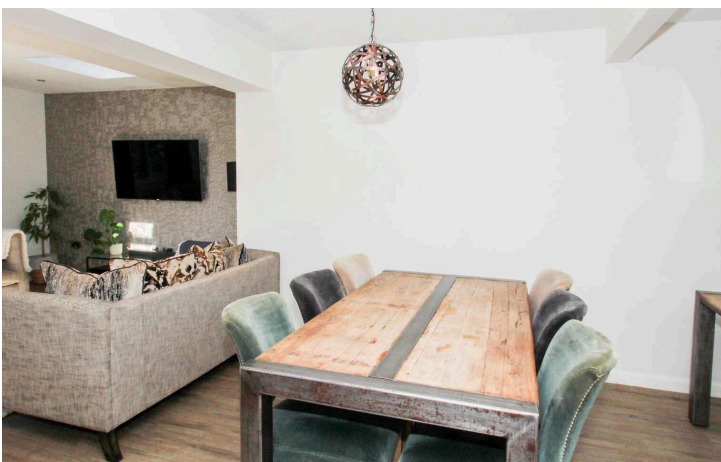




**Stevenson Marshall**  
Property & Law



[www.stevenson-marshall.co.uk](http://www.stevenson-marshall.co.uk)

 5    3    3



5 Birnam Gardens, Dunfermline, KY11 8FQ

Offers Over £375,000



# A beautifully presented extended detached townhouse, in quiet location with pleasant open outlooks to front in peaceful setting.

There is an excellent internal layout over three floors, which includes a reception hallway, family room, utility room, WC/cloaks, large open plan luxury kitchen/dining area with lounge to rear (with feature sky light windows and French Doors to garden). The first floor provides access to master bedroom with en-suite shower room, two further double bedrooms and family bathroom. The top floor provides access to two full length double bedrooms.

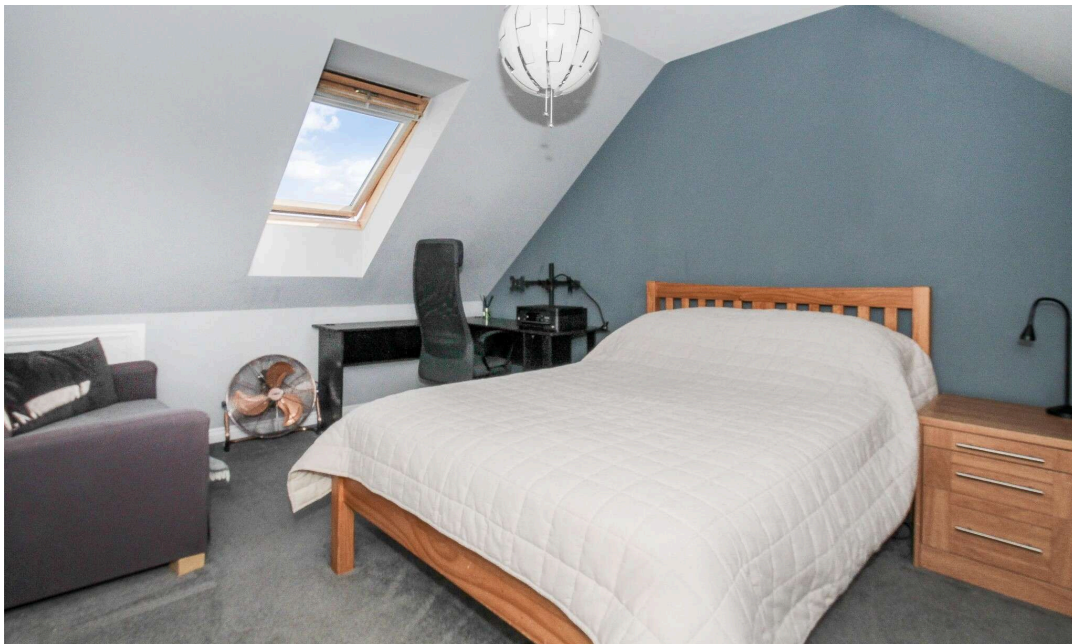




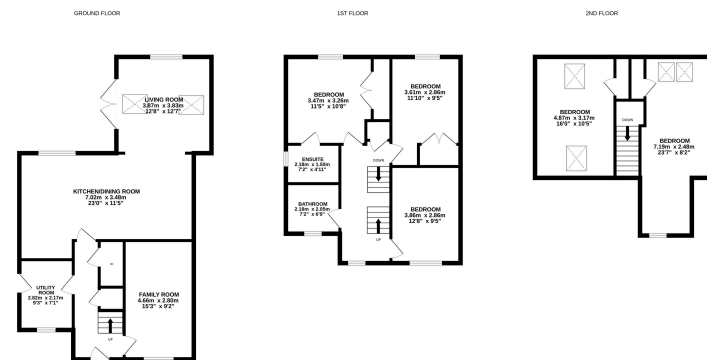
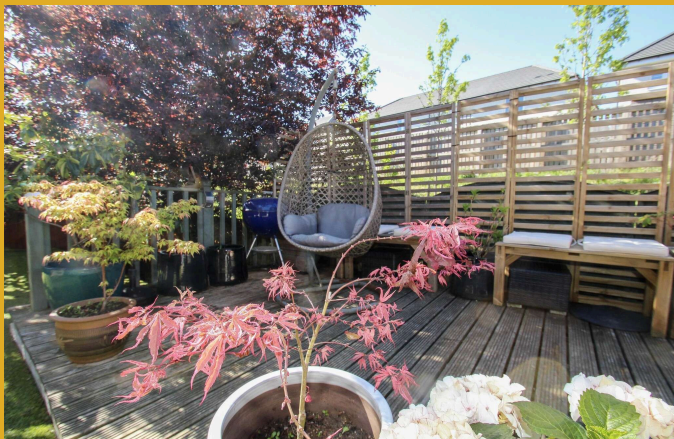


Gas central heating is installed with double glazed windows throughout. The property boasts tasteful décor, quality carpets, LVT flooring, excellent storage and a flexible layout.

The neat gardens feature many mature trees, shrubs, quality decking, patio and hot tub. There are drying facilities provided and the garden storage box is included in the sale price. The driveway provides ample parking for two vehicles. Worth highlighting are the open outlooks to the attractive green space to front.







Birnam gardens enjoys a quiet setting, within walking distance of Queen Margaret Rail Halt (services to Edinburgh). There are well reputed secondary and primary schools all within easy reach and the Fife Leisure Park, Asda superstore and Halbeath Park & Ride facilities are close by. Dunfermline City Centre is approximately 2.5 miles away. The motorway network and Edinburgh airport can be reached quickly and easily and a regular bus service operates.



**Stevenson Marshall**  
Property & Law

An appointment to view can be made by contacting selling agents on 01383 721141.

Contact us

41 East Port, Dunfermline, KY12 7LG | Tel: 01383721141

DX DF80 Dunfermline | Email: [property@stevenson-marshall.co.uk](mailto:property@stevenson-marshall.co.uk)

Follow us  @Stevenson.Marshall

[www.stevenson-marshall.co.uk](http://www.stevenson-marshall.co.uk)

**espc**

**rightmove**

NATIONAL ASSOCIATION  
**NAEA**  
ESTATE AGENTS

Whilst every care is taken in the preparation of these particulars, please check all dimensions and floor plan shapes, as these particulars do not form part of any contract and the statements or plans contained herein are not warranted nor to scale. Approximate measurements have been taken by electronic device at the widest point. Services and appliances have not been tested for efficiency or safety and no warranty is given as to their compliance with any Regulations.